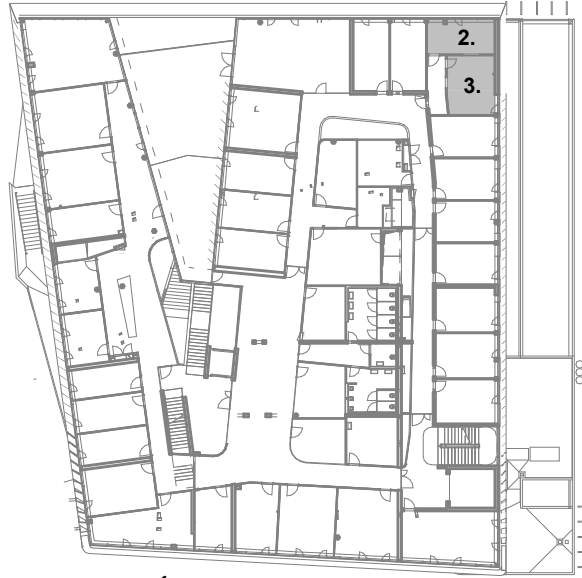
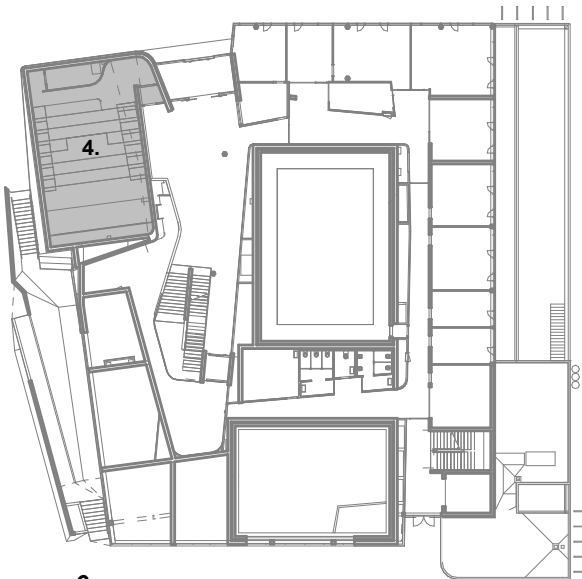
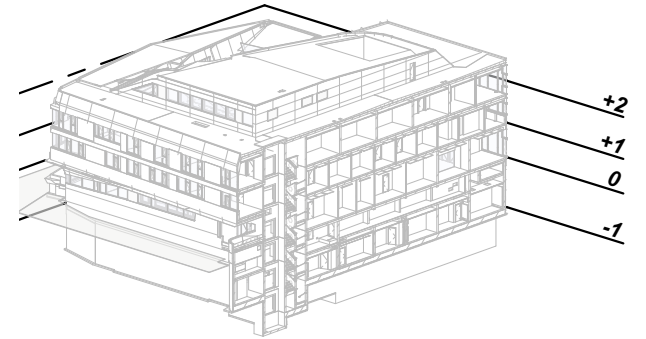


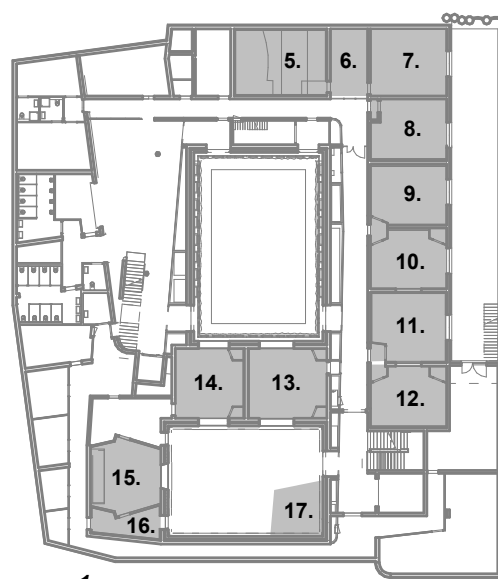
+2



+1



0

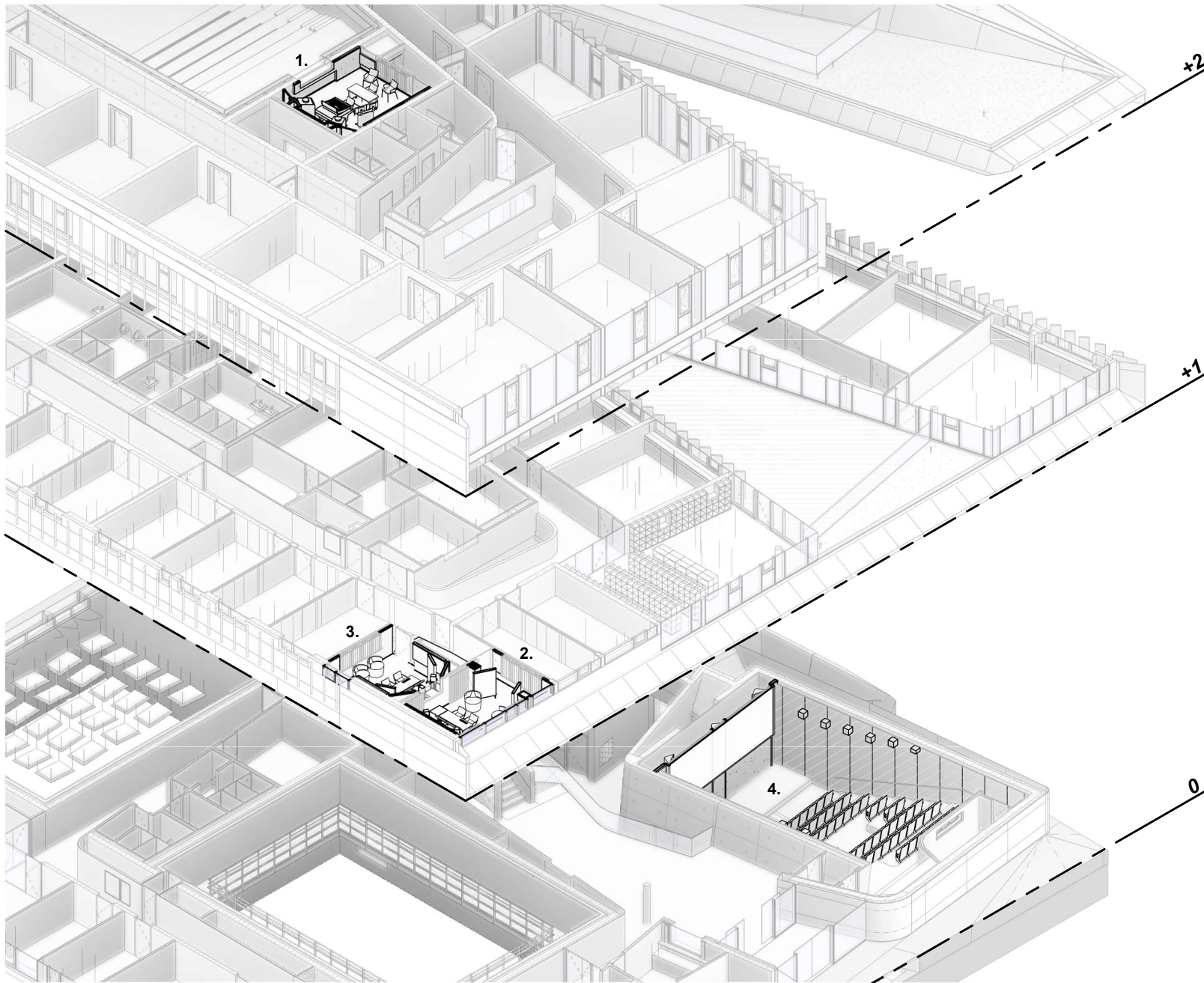


-1

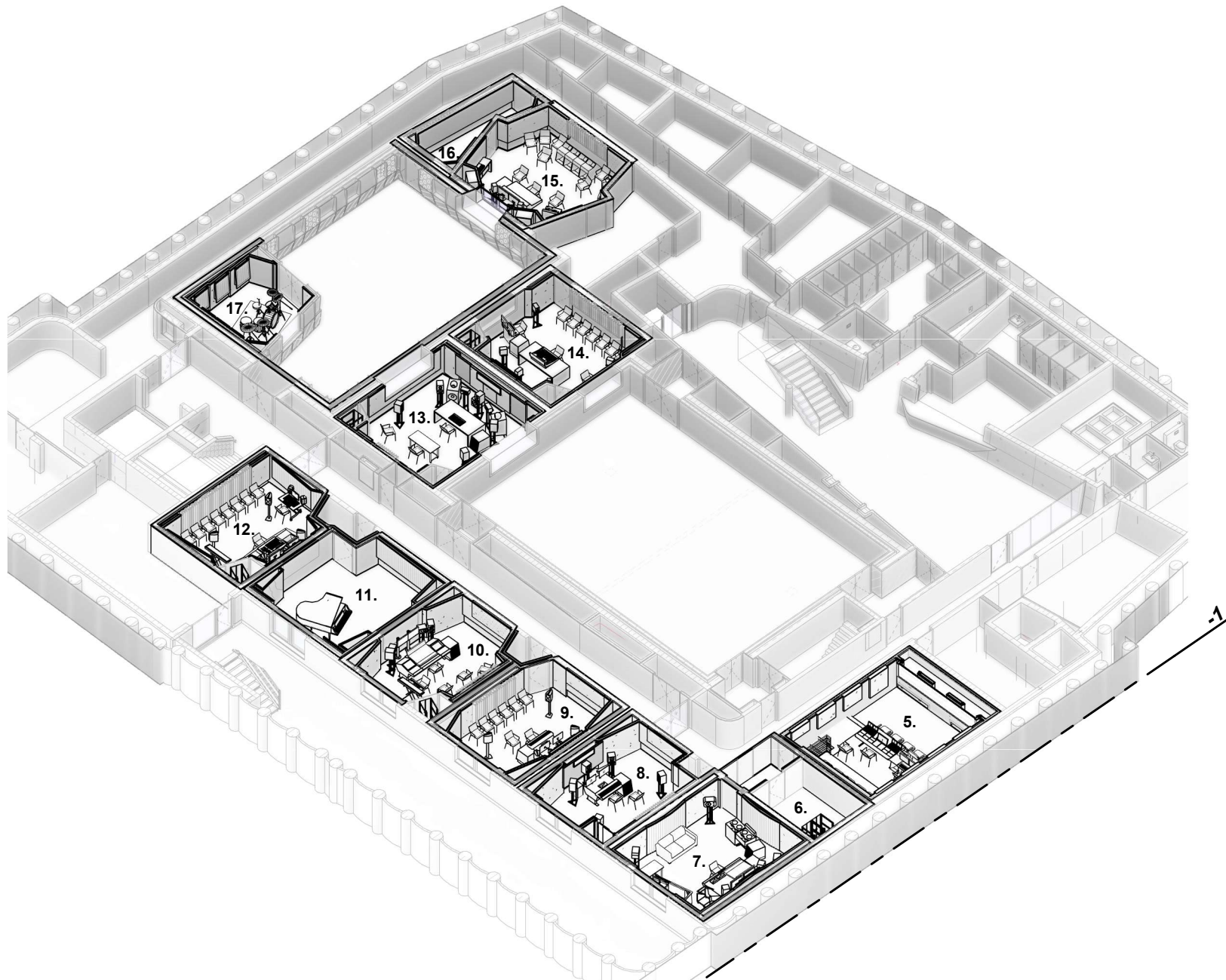
- | | |
|---|--|
| 1. REGIERAUM
CONTROL ROOM | 10. LEHRSTUDIO 2
TEACHING STUDIO 2 |
| 2. SOUND-DESIGN 2
SOUND DESIGN 2 | 11. KL. AUFNAHMERAUM
RECORDING ROOM |
| 3. SOUND-DESIGN 1
SOUND DESIGN 1 | 12. LEHRSTUDIO 1
TEACHING STUDIO 1 |
| 4. ARTHOUSE KINO
ARTHOUSE CINEMA | 13. TONREGIE A
CONTROL ROOM A |
| 5. FILMTON / MM-STUDIO
FILMTON / MM-STUDIO | 14. TONREGIE B
CONTROL ROOM B |
| 6. SCHLEUSE
SOUND LOCK | 15. TONREGIE C
CONTROL ROOM C |
| 7. EXPERIMENTAL STUDIO
EXPERIMENTAL STUDIO | 16. SPRECHERKABINE
VOCAL BOOTH |
| 8. LEHRSTUDIO 4
TEACHING STUDIO 4 | 17. DRUM-BOOTH
DRUM BOOTH |
| 9. LEHRSTUDIO 3
TEACHING STUDIO 3 | |

0 5 10 30 METERS

0 25 50 100 FEET



1. REGIERAUM
CONTROL ROOM
2. SOUND-DESIGN 2
SOUND DESIGN 2
3. SOUND-DESIGN 1
SOUND DESIGN 1
4. ARTHOUSE KINO
ARTHOUSE CINEMA



- 5. FILMSTON / MM-STUDIO
FILMSTON / MM-STUDIO
- 6. SCHLEUSE
SOUND LOCK
- 7. EXPERIMENTAL STUDIO
EXPERIMENTAL STUDIO
- 8. LEHRSTUDIO 4
TEACHING STUDIO 4
- 9. LEHRSTUDIO 3
TEACHING STUDIO 3
- 10. LEHRSTUDIO 2
TEACHING STUDIO 2
- 11. KL. AUFNAHMERAUM
RECORDING ROOM
- 12. LEHRSTUDIO 1
TEACHING STUDIO 1
- 13. TONREGIE A
CONTROL ROOM A
- 14. TONREGIE B
CONTROL ROOM B
- 15. TONREGIE C
CONTROL ROOM C
- 16. SPRECHERKABINE
VOCAL BOOTH
- 17. DRUM-BOOTH
DRUM BOOTH